



2776 Gold Creek Dr.
Elizabeth, CO 80107



Rare find! Come home to your private getaway, only minutes from town and Hwy 86. Surrounded by mature pine trees, this 2.25 acre property is the most secluded lot in the coveted Gold Creek Meadows subdivision.

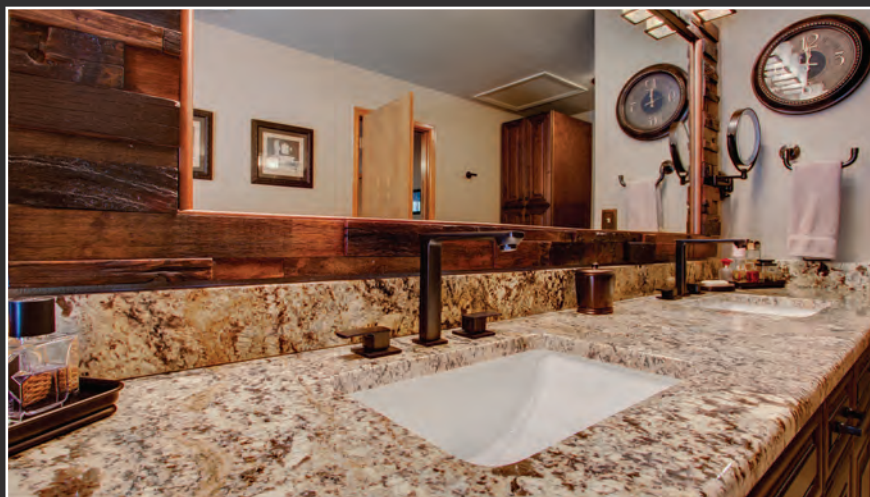
This 5 bedroom, 3 bath home is perfect for entertaining guests or for long weekends in at home. Never worry about tight cooking spaces again with the large 19X20 kitchen.





MASTER RETREAT

This home features a newly remodeled master bath, wrap around driveway, and backs to open space with a natural spring.





BASEMENT RETREAT

The fully finished walkout basement is perfect for entertaining and family activities.





FEATURES INCLUDE

- 40X60 Barn
- 14 ft ceiling in Barn
- Electric in Barn
- 2.25 acres
- 5 bed
- 3 bath
- 4276 sq ft
- Large 19 X 20 kitchen
- Backs to open space with Natural Spring
- Heavily Treed
- Most private lot in Gold Creek Meadows
- Location close to Highway 86
- 20 minutes to Castle Rock or Parker
- 45 minutes to Denver or Colorado Springs
- Wrap around deck
- Pikes Peak views
- Wrap around and Round about driveway
- Remodeled bathrooms
- 5 piece master bath
- 3 car oversized garage
- Built in Dog Run in and out garage
- Finished walk out basement
- Stamped concrete patio
- Open floor plan





Enjoy the sun set over Pikes Peak while sitting on the wrap around deck. The 40X60 outbuilding is perfect for storing your outdoor equipment and toys. You will see plenty of wildlife throughout the year as deer and wild turkeys frequently pass through the area. With Colorado springs and Denver only a 45 minute drive and Castle Rock/Parker only 20 minutes away, this is the perfect home in the perfect location.

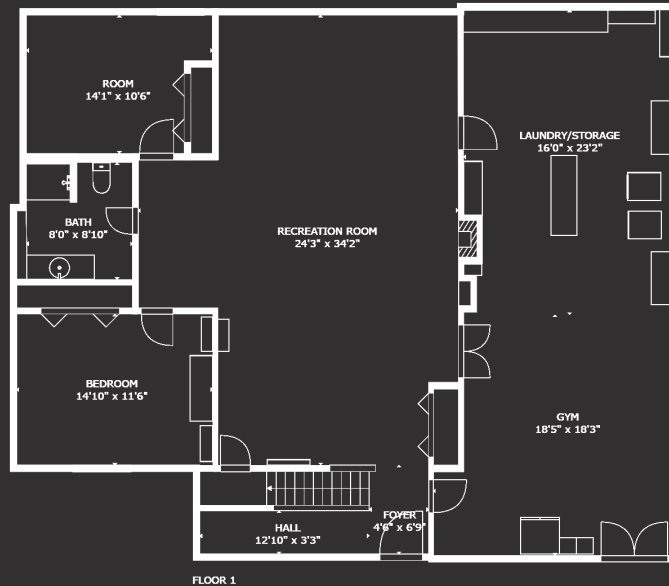
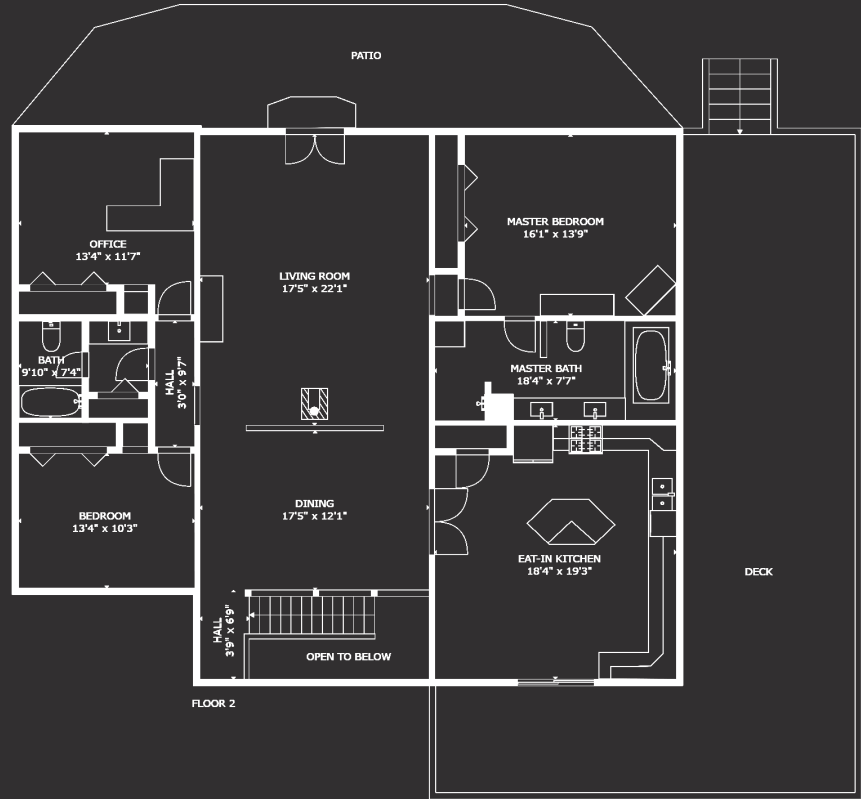


GENERAL INFORMATION

Water Well
 Electricity IREA
 Gas Black Hills
 Subdivision Gold Creek Meadows
 HOA \$40/Year
 Taxes/Yr \$2,997/2018
 Bedrooms 5
 Bathrooms 3
 Garage 3 - Car Detached
 Style Ranch
 Total Square Feet 4,276
 Finished 3,559
 Main Level 2,138
 Basement Level 2,138
 Construction Wood/Frame
 Heating Forced Air, Wood Stove
 Cooling Central Air, Ceiling Fan
 Elementary School Running Creek
 Elementary School 2 Singing Hills
 Middle School Elizabeth
 High School Elizabeth
 School District Elizabeth C-1

Inclusions

Window coverings, gas range/oven,
 dishwasher, refrigerator, microwave, jetted
 bath tub, garage door opener, disposal,
 fire alarm(s).



Information is deemed reliable, but not guaranteed. © 2020 C3 Real Estate Solutions, LLC.



INSTITUTE for
 LUXURY HOME
 MARKETING

MEMBER



Matt Shoup

Realtor® | CNE
 970-217-6060
 matt@mattshoup.com
 www.MattShoupRealtor.com



Gunnar Greenlee

Realtor®
 303-854-7043
 gggreenlee@c3-re.com
 www.GunnarGreenlee.com